

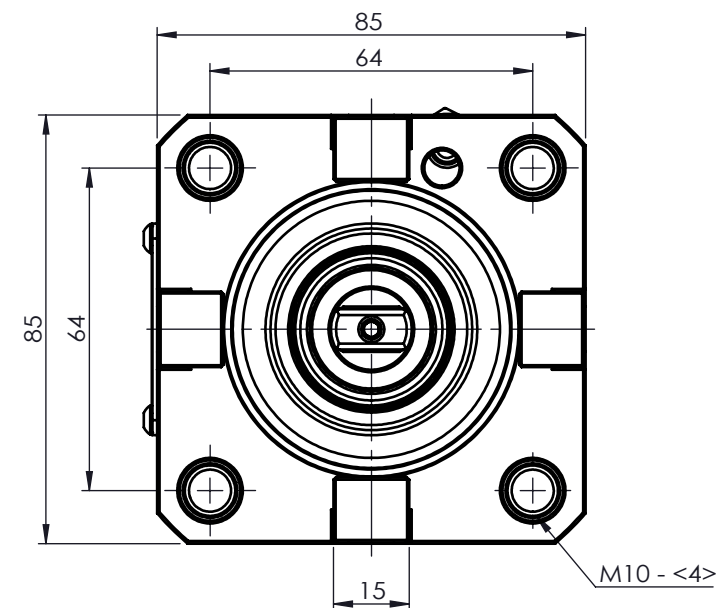
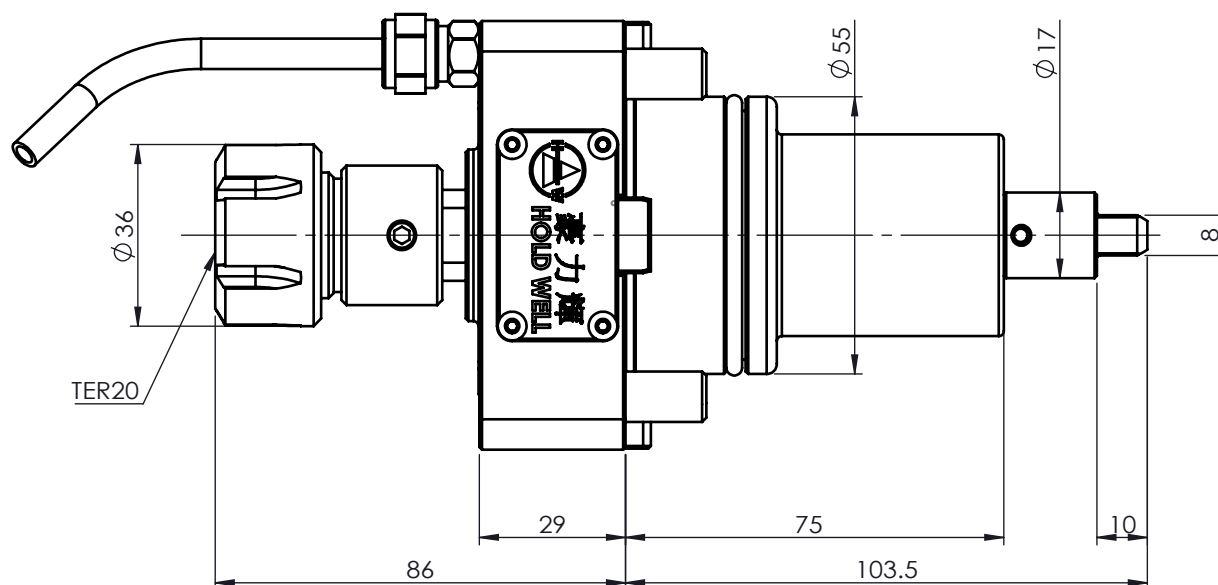
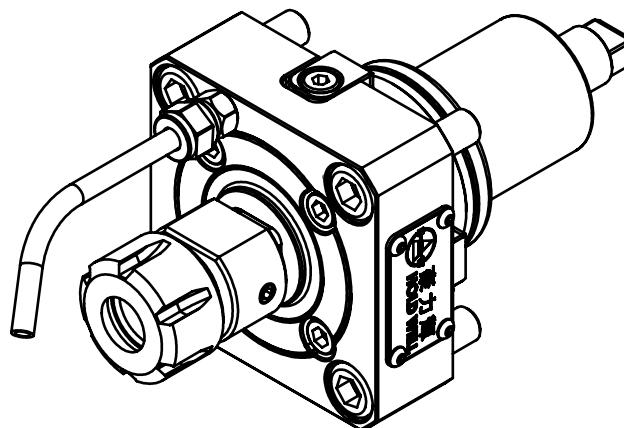
TECHNICAL FEATURES :

Max speed : 6000rpm

Max torque : 20Nm

Output : TER20

Coolant : External



Machine type :

PUMA 230-240M/MS-280LM - PUMA 1500-2000-2500M/MS/Y/SY -
LINX 300 M - PUMA 2100 SERIE -PUMA TT1500 - TT1800MS/SY -
PUMA TL2000-2500 (M) - MX1600/2100TS -
PUMA GT2100 M



豪力輝工業股份有限公司
HOLD WELL INDUSTRIAL CO.,LTD

E-mail : sales@mail.holdwell.com
<http://www.holdwell.com>

品號

Model No.

品名

Description

THM-A15-55A

BMT55-TER20軸向動力刀座

BMT55-TER20 Axial Driven Tapping Tool Holder