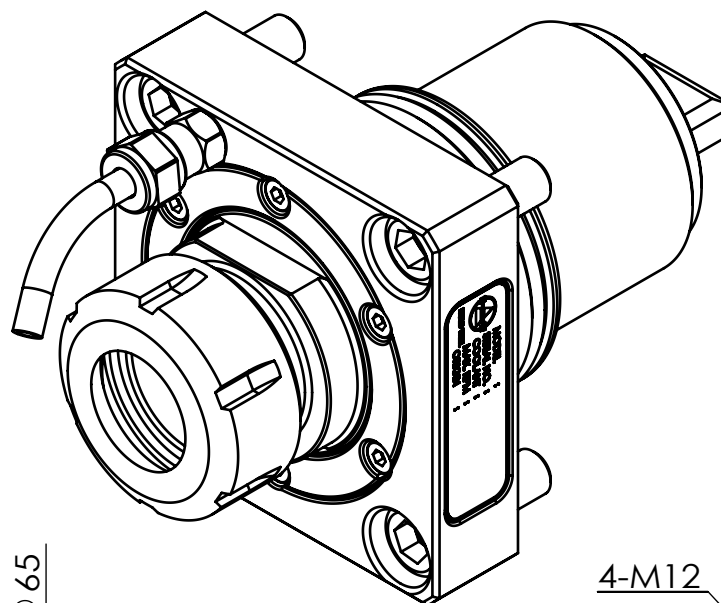
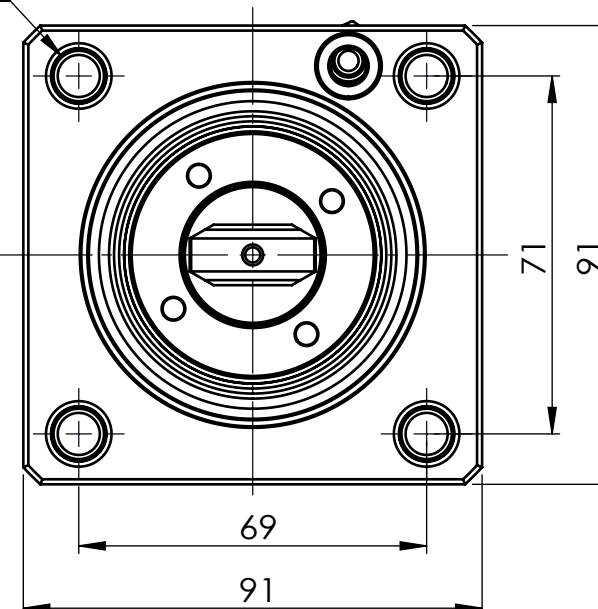
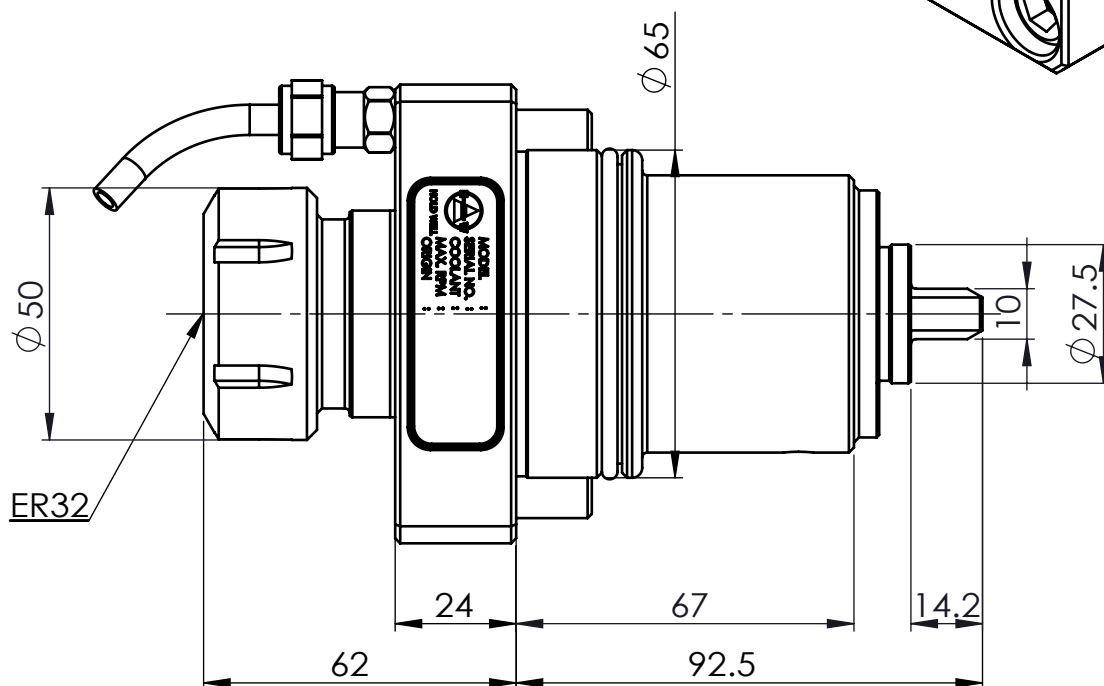


TECHNICAL FEATURES :

Max speed : 6000rpm
 Max torque : 32Nm
 Output : ER32
 Coolant : External



4-M12



Machine type :

WT300 - SC300 -SUPER NTX - SUPER NTXL -
 TW20M/MY/MM/MMY/MMYY 12 ST. -
 TW30M/MY/MM/MMY/MMYY 16 ST.



豪力輝工業股份有限公司
HOLD WELL INDUSTRIAL CO.,LTD

E-mail : sales@mail.holdwell.com
<http://www.holdwell.com>

品號

Model No.

THM-A05-65N

品名

Description

Nakamura BMT65-1809-ER32軸向動力刀座
 Nakamura BMT65-ER32 Axial Driven Tool Holder