

CAT50

ER32

Ø 103

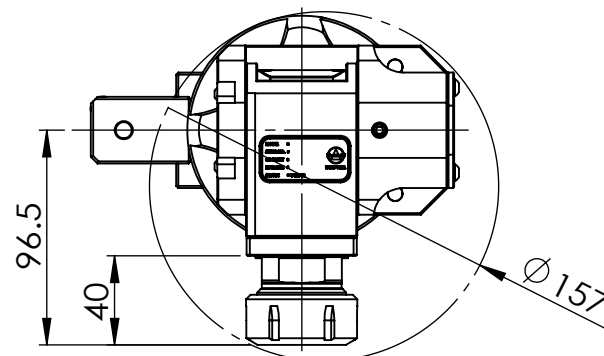
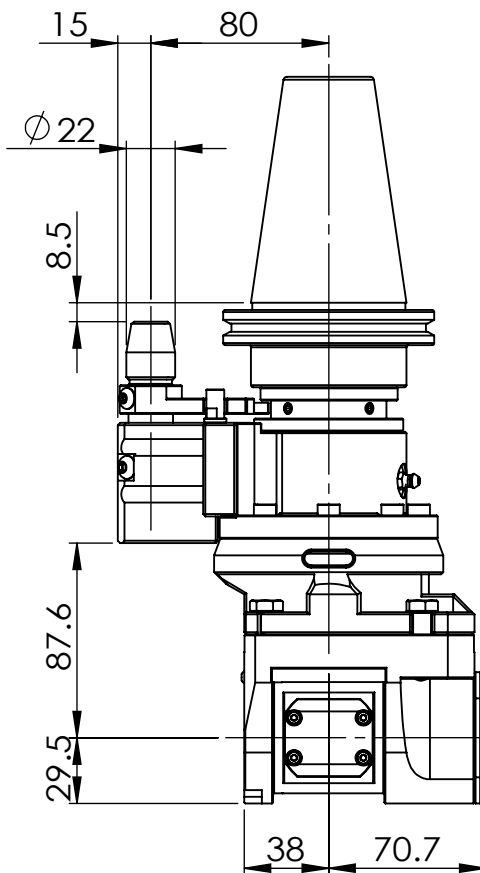
76

64.5

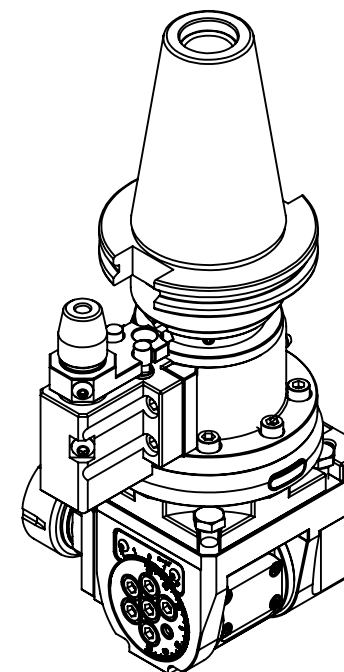
195.6

Ø 50

+90°~-90°



TECHNICAL FEATURES :
Max speed : 4000rpm
Max torque : 20Nm
Ratio : 1:1
Output : ER32



Machine type :

CAT50



豪力輝工業股份有限公司
HOLD WELL INDUSTRIAL CO.,LTD

E-mail : sales@mail.holdwell.com
http://www.holdwell.com

品號
Model No.

品名
Description

AHG-CAT50-A2.80

G型 CAT50-ER32
萬向橫銑頭(中心距80)